

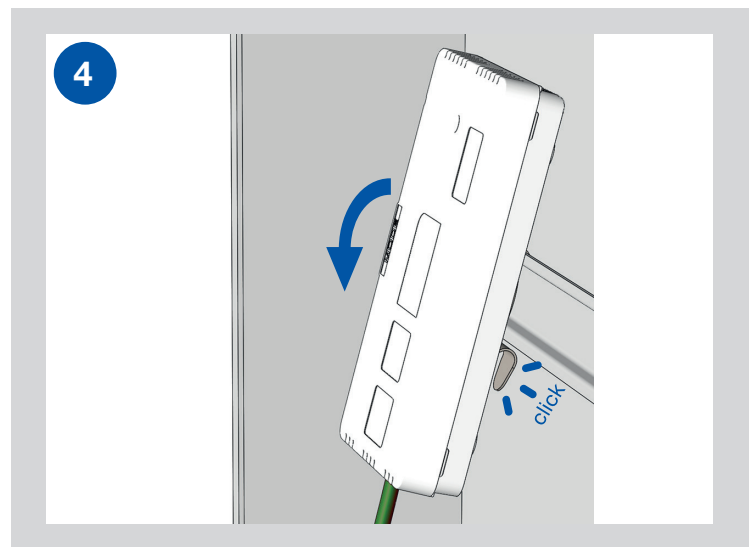
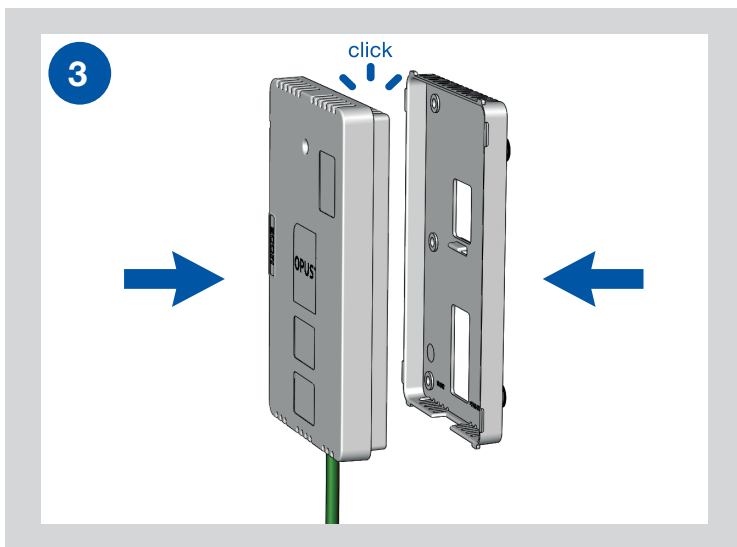
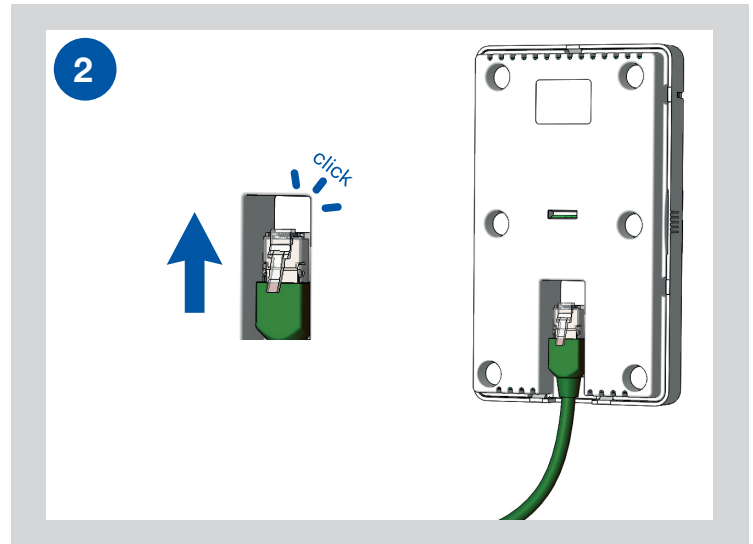
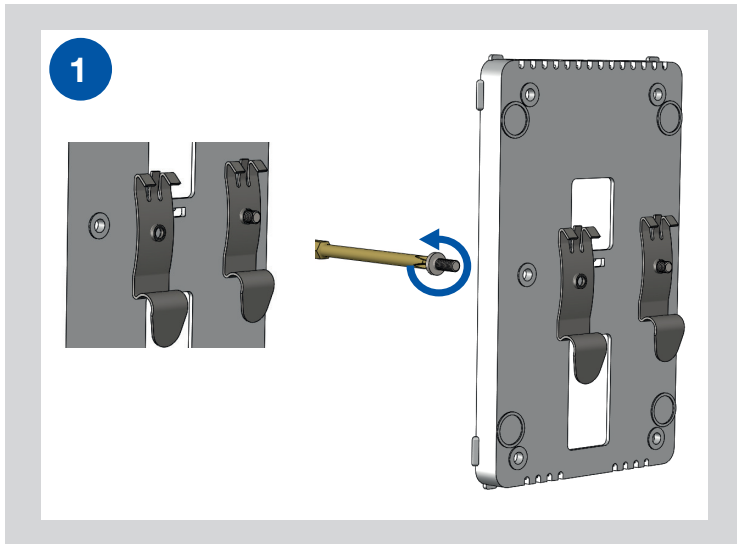


OPUS® IQ

OPUS IQ DOT
Installationsanleitung
Art.-Nr.: 563.909, 563.912, 563.914, 563.916, 563.908

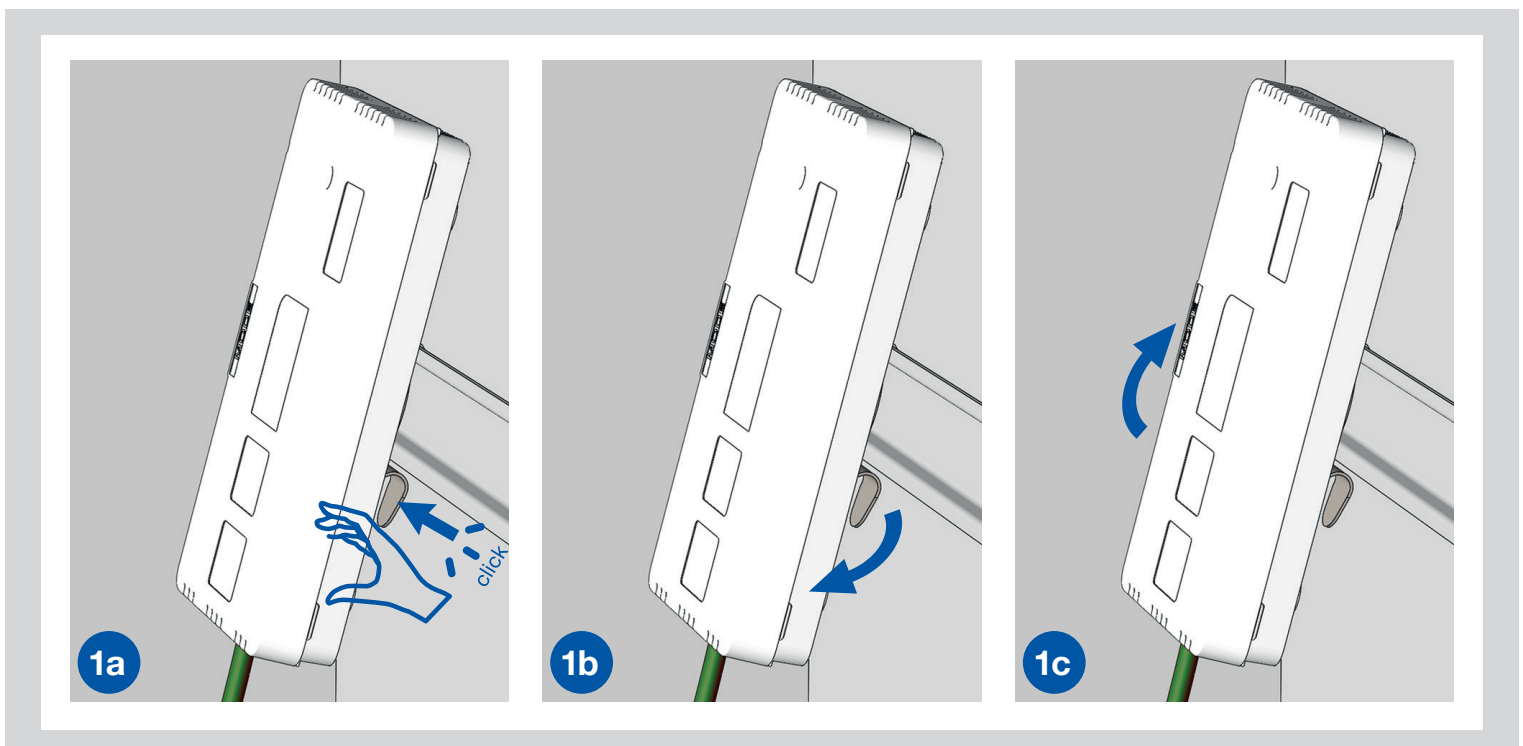
CE RoHS   

1.1 Montage auf der Hutschchiene

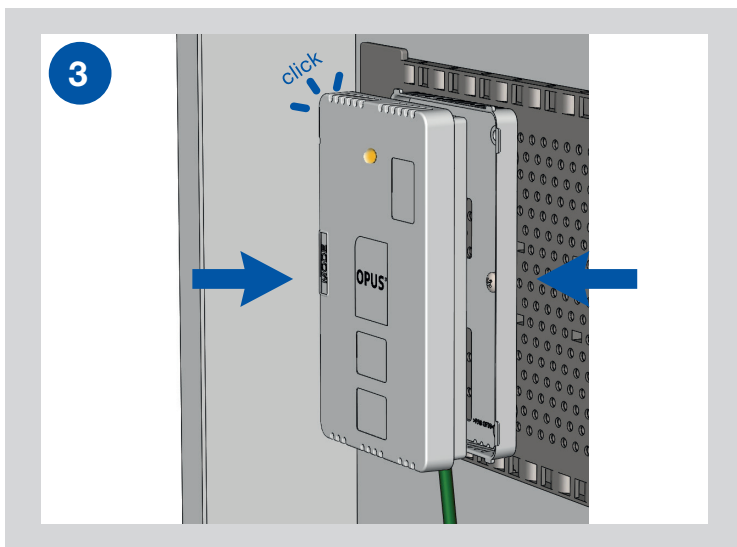
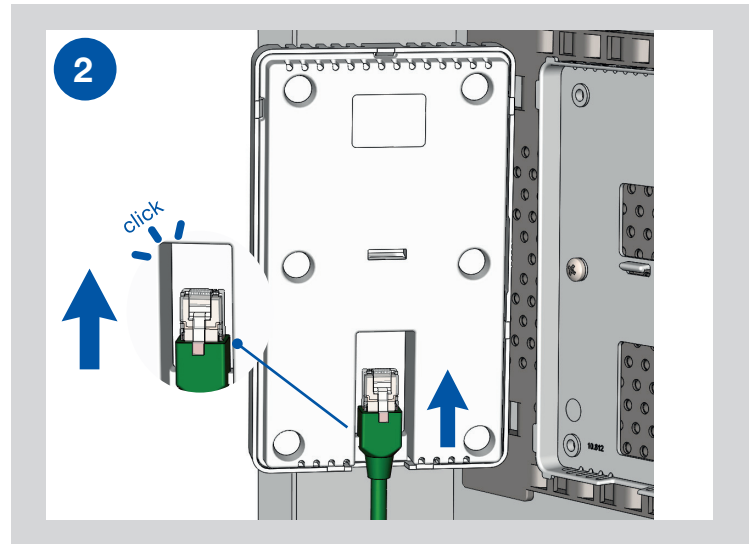
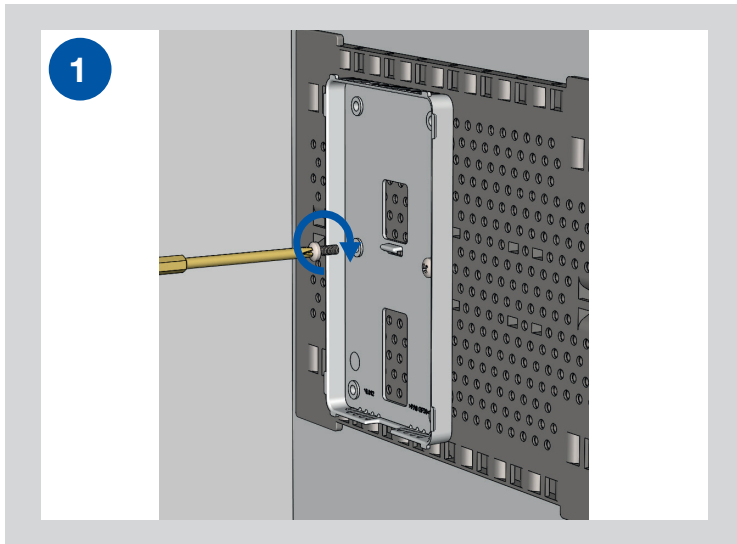


1.2 Demontage

Demontage in umgekehrter Reihenfolge vornehmen

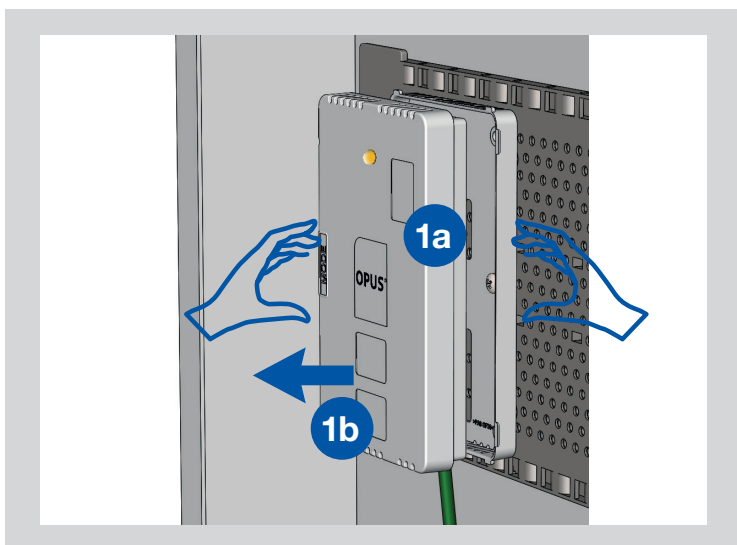


2.1 Montage auf der Lochrasterplatteschiene

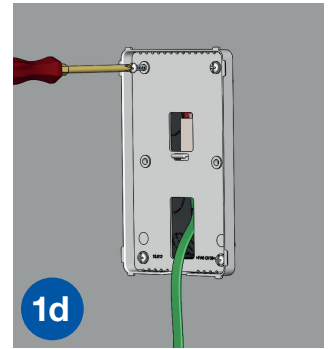
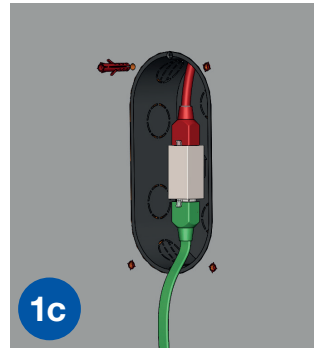
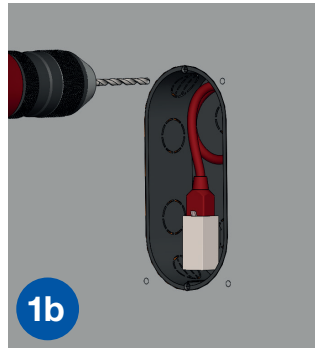
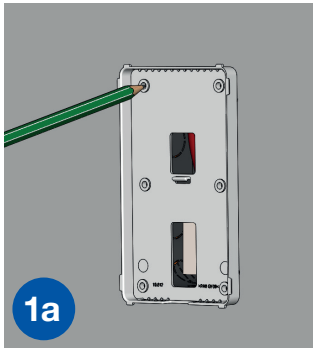


2.2 Demontage

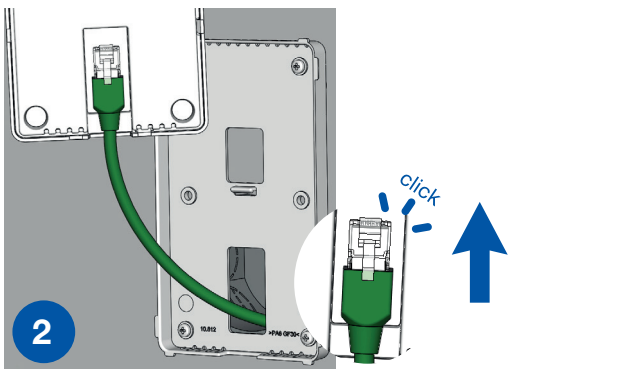
Demontage in umgekehrter Reihenfolge vornehmen



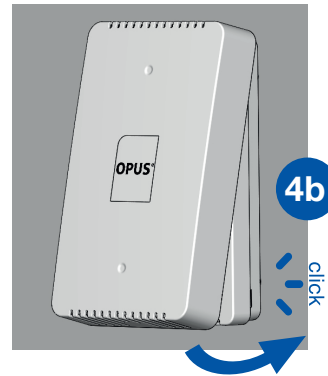
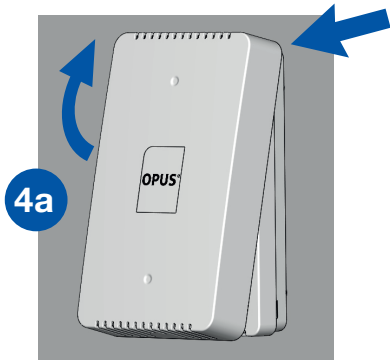
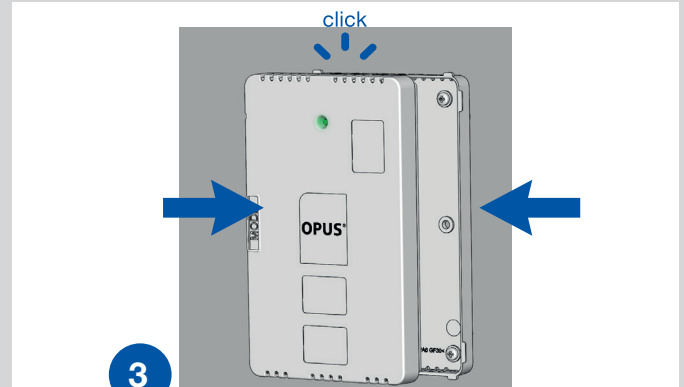
3.1 Montage an der Wand über UP-Dose



hochflexibles LAN-Kabel verwenden, Art.-Nr.: 90ITBFLEX6APK015G

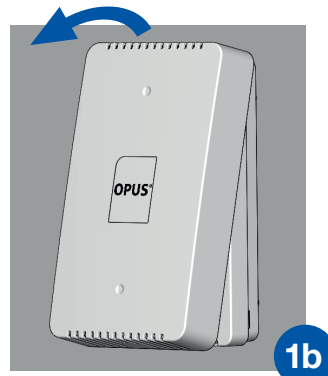
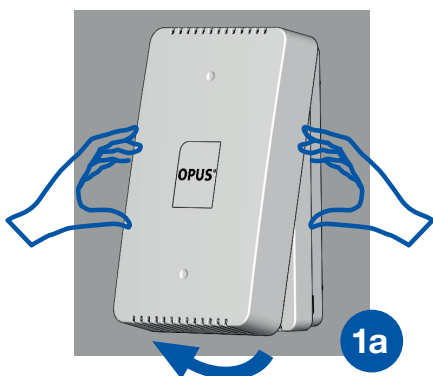


hochflexibles LAN-Kabel verwenden, Art.-Nr.: 90ITBFLEX6APK015G

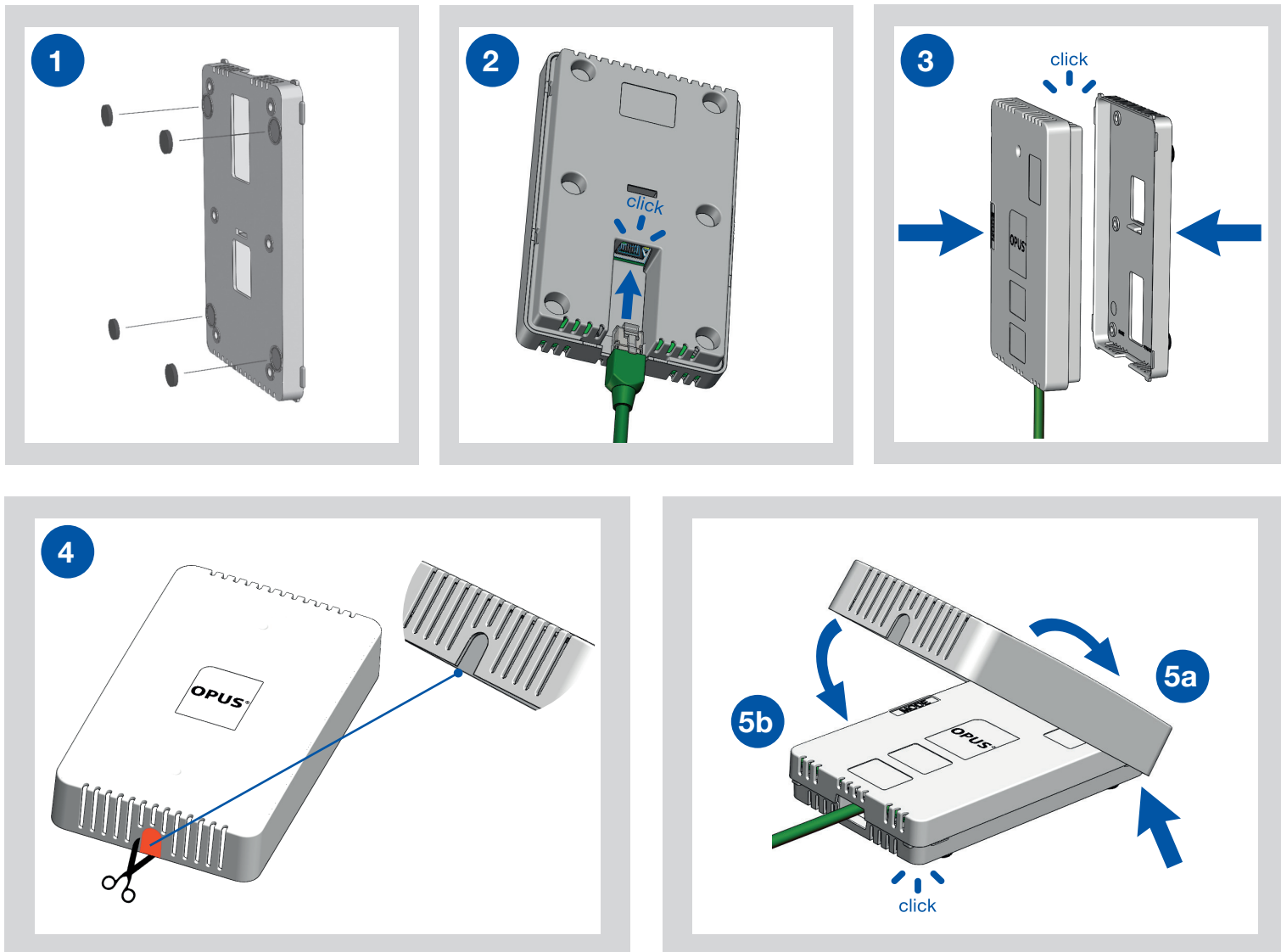


3.2 Demontage

Demontage in umgekehrter Reihenfolge vornehmen



4.1 Liegend auf Tisch oder Sideboard / Desktop-Montage



4.2 Demontage

Demontage in umgekehrter Reihenfolge vornehmen

